



# NeoLife - yourday2day Veronica's Guides

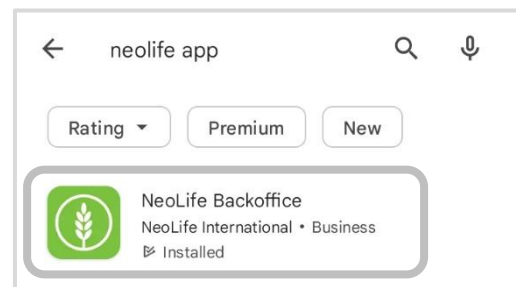
## GUIDE FOR: NeoLife App Users

### GUIDE FOCUS: Profile Set Up and Login

This guide will show you how to set up your NeoLife profile (including profile picture, addresses and more) using the official NeoLife App.

#### STEP 1 – Getting the app

First download the NeoLife app from the Apple Store or Google Play



#### STEP 2 – Username and password



Opening the app will automatically take you to the login screen. Enter your username and password. When you joined yourday2day Veronica created a NeoLife profile for you and a SMS was sent with your new username and password. If this did not happen within 30 minutes of your joining yourday2day feel free to contact Veronica at 083 667 7540.



# NeoLife - yourday2day Veronica's Guides

## STEP 3 – The home screen

After successfully logging in you will go to the app home screen. Here you will be able to sign in new customers, shop and view your NeoLife profile. To set up or edit your profile the menu by tapping the button that looks like three horizontal bars on the top left of your screen.

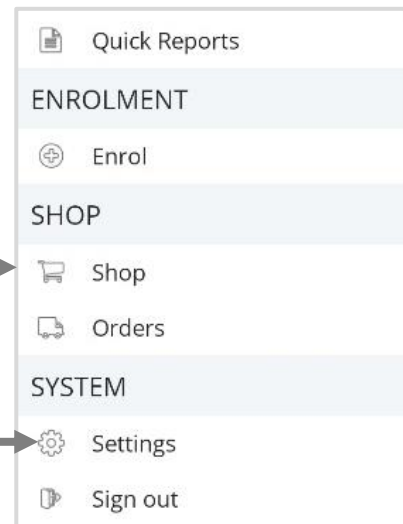


## STEP 4 – Settings

A menu will appear. Choose the settings option at the bottom. This will give you the option to edit your profile picture, address and the app settings.

Scroll down until you see this part of the menu

Tap "Settings"



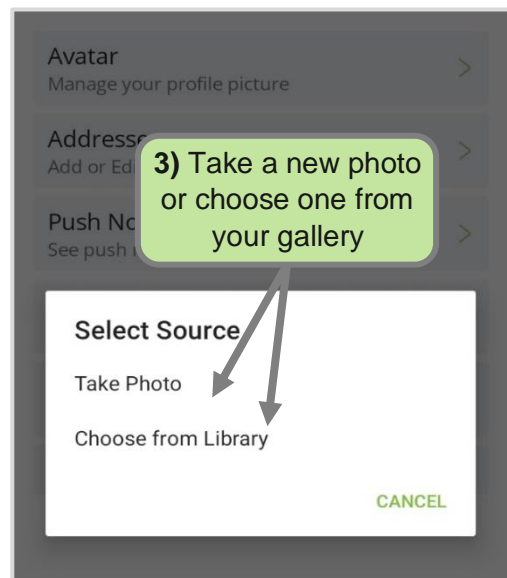
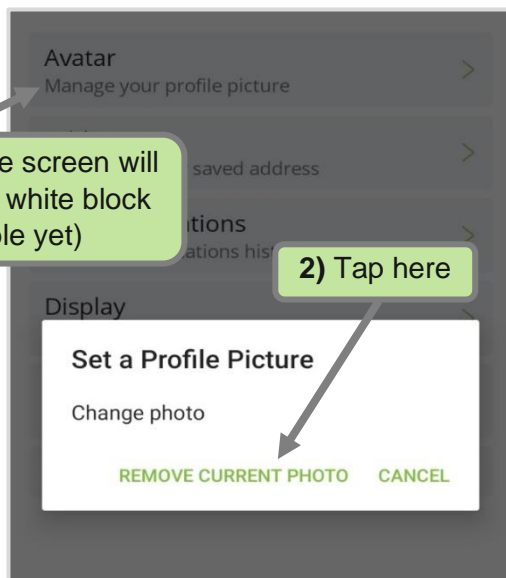
## STEP 5 – profile photos

To add a profile picture, choose the Avatar option. A pop-up window will appear saying "set a Profile Picture". Select "Change photo". You then have the option to choose a photo from your galleries or take a new picture.

1) Tap this option (the screen will not be dark, and the white block will not be visible yet)

2) Tap here

3) Take a new photo or choose one from your gallery





# NeoLife - yourday2day

## Veronica's Guides

### STEP 6 – Delivery address

To add an address for deliveries, choose the “Address” button below the Avatar option. In the address menu select “Add address”. Fill in your details in the blocks provided. This will be your main address, but you can add others if you decide to.



← **Addresses** Save

COUNTRY  
Country

Street Address

Apt, suite or box # (optional)

City

STATE  
State

Fill in this information, and scroll down to make sure everything is filled in