



NEOLIFE® -yourday2day

Veronica's Guides

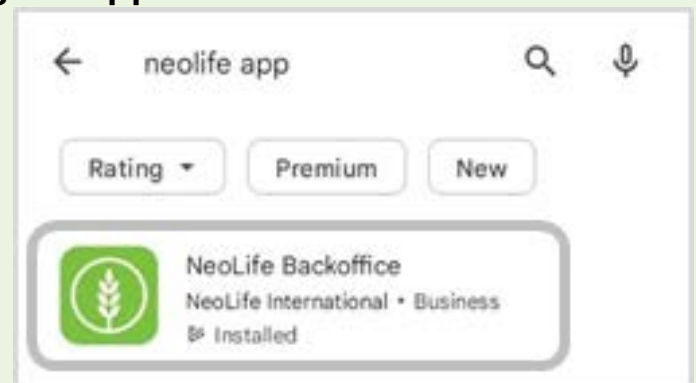
NeoLife Profile Setup and Login

A Guide for NeoLife App Users

This guide will show you how to set up your NeoLife profile (including profile picture, addresses and more) using the official NeoLife App.

STEP 1 – Getting the app

First download the NeoLife app from the Apple Store or Google Play



STEP 2 – Username and password

- Opening the app will automatically take you to the login screen.
- Enter your username and password.



A NeoLife profile was created for you when you joined yourday2day and you should have received an SMS with your login details within 30 minutes

If you have not received these please contact Veronica using the details below



Contact me:

+27 836677540

veronica@yourday2day.co.za





NEOLIFE® -yourday2day

Veronica's Guides

STEP 3 – The Home Screen

Once you have logged in you will be taken to the home screen

Here You can sign in new customers, shop and view your NeoLife Profile

Setup/Edit your profile by clicking the three horizontal bars on the top-left of your screen

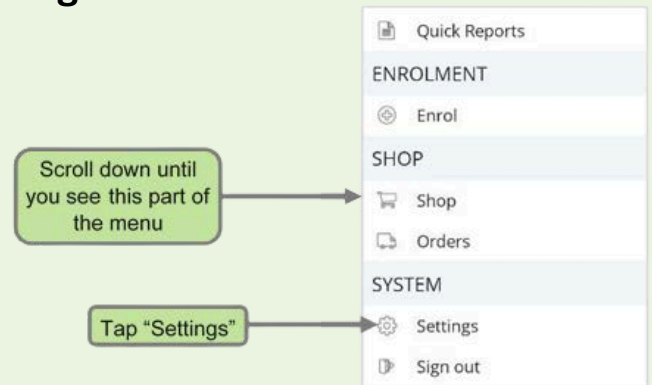


STEP 4 – Settings

After clicking the menu icon (the three bars at the top-left of the home screen) the menu will appear.

Click the settings button near the bottom of the menu

Here you can edit your profile picture, address and app settings



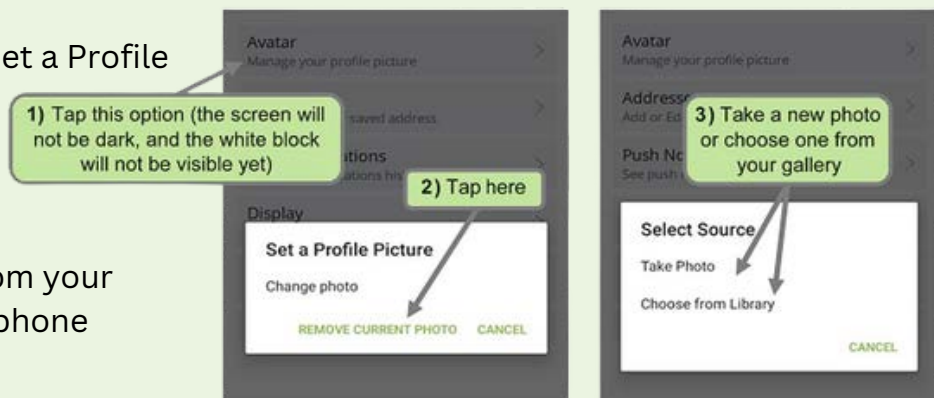
STEP 5 – Profile Photo

To add a profile picture, select “avatar”

A popup window will appear saying “set a Profile Picture”.

Select “Change Photo”

You can then either select a photo from your phone gallery or take one using your phone





NEOLIFE® -yourday2day

Veronica's Guides

STEP 6 – Delivery Address

To add a delivery address to your profile, first select the “Address” button below the Avatar button.

Then select “Add Address”

This will then become your main address



Fill in this information and scroll down to make sure everything is filled in

Thank You!

Hopefully this has been a helpful guide on using the NeoLife App and will assist you running your business effectively.

There are plenty of other guides available to help you as you continue your journey with NeoLife.

If you have any questions, please feel free to either head over to my website by clicking here

Or reach out to me via SMS, WhatsApp or email



Contact me:

+27 836677540

veronica@yourday2day.co.za

